

B-30-1

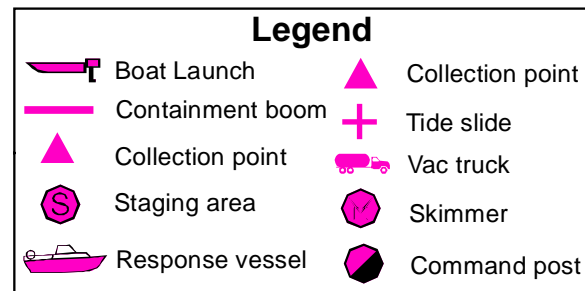
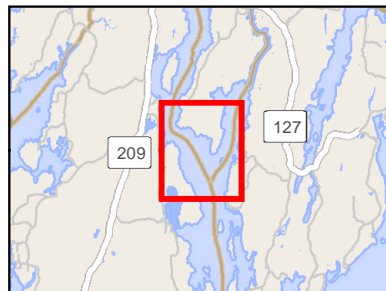
Back River - Spill from Downriver

Arrowsic / Georgetown

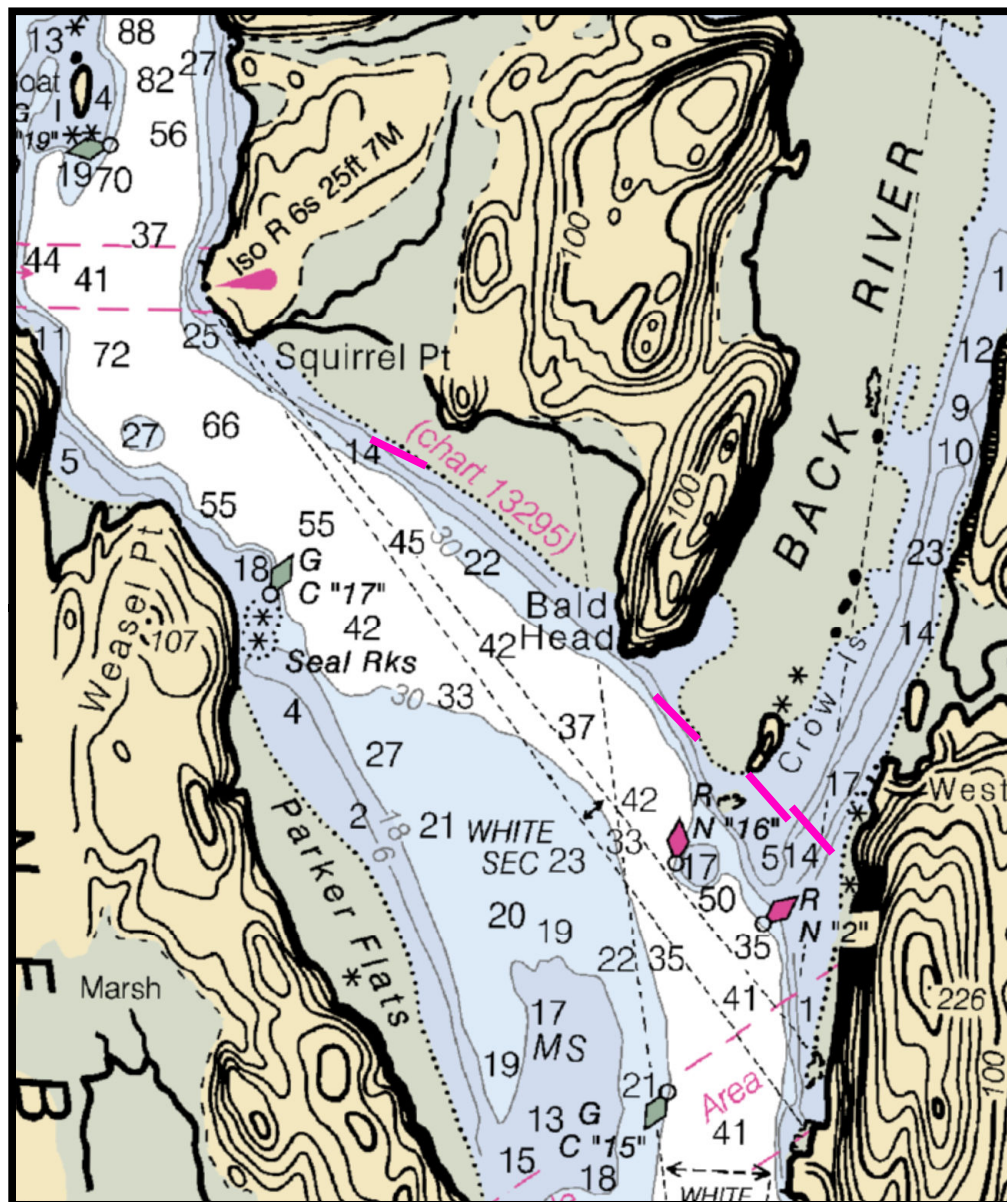
0 1,000 2,000
Feet



Printed: 4/11/2018



Source: Esri, DigitalGlobe, GeoEye, Earthstar
Geographics, CNES/Airbus DS, USDA, USGS,
AeroGRID, IGN, and the GIS User Community



Back River - Spill from Downriver

Town Arrowsic / Georgetown

Port Region Casco Bay

Latitude 43° 48.154' N **Longitude** -69° 46.733'

Strategy B-30-1

NOAA Chart # 13293 **ESI Map #** 46A

EVI Map # 19

Resources At Risk

ESI Shoreline Type(s) Exposed wave cut platforms (bedrock, mud, clay)

Environmental Concerns Salt marsh, shorebird and waterfowl habitat, diadromous fish, rare plants

Strategy Information

Strategy Purpose To exclude / deflect oil from Back River and Squirrel Point marsh

Work Assignment Deploy two 500 foot sections of boom across the main channel of the Back River. Deploy a third 500 foot section of deflection boom between Crow Island and Bald Head. Deploy a fourth 500 foot section of boom to deflect oil from Squirrel Point marsh

Staging Areas Kennebec River boat launch, Fiddler's Reach Road, Phippsburg

Site Access By water

Nearest Boat Ramp Kennebec River boat launch, Fiddler's Reach Road, Phippsburg

Collection Points N/A

Approx. Tidal Range (feet) 9

Max Current (knots) **Flood** **Ebb** **Source**

Special Instructions

Recommended Equipment / Resources

Length of Boom (feet) 1000 **Type of Boom** 12" - 18" containment boom

Recommended Equipment (Minimum) 6 - anchor systems: 35 lb. Danforth or equivalent and line for 3:1 scope plus tag line with buoy.
2 - shoreside connections
2 - workboats with minimum 90 hp
2 - boat operators
4 - laborers

Unless otherwise indicated, the boom length given is the distance measured on the chart. Actual length required may vary with conditions.