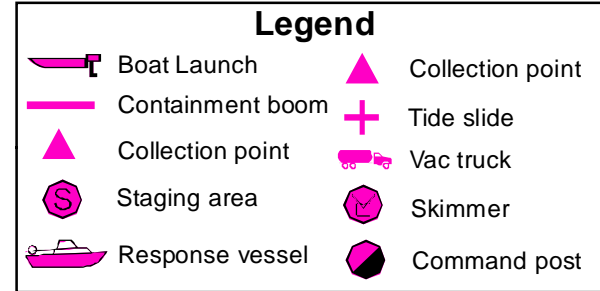
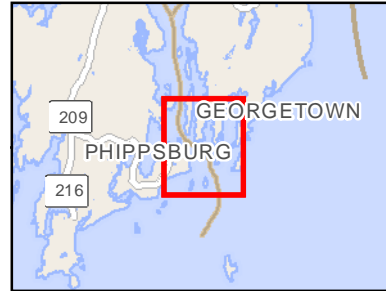


B-27-1

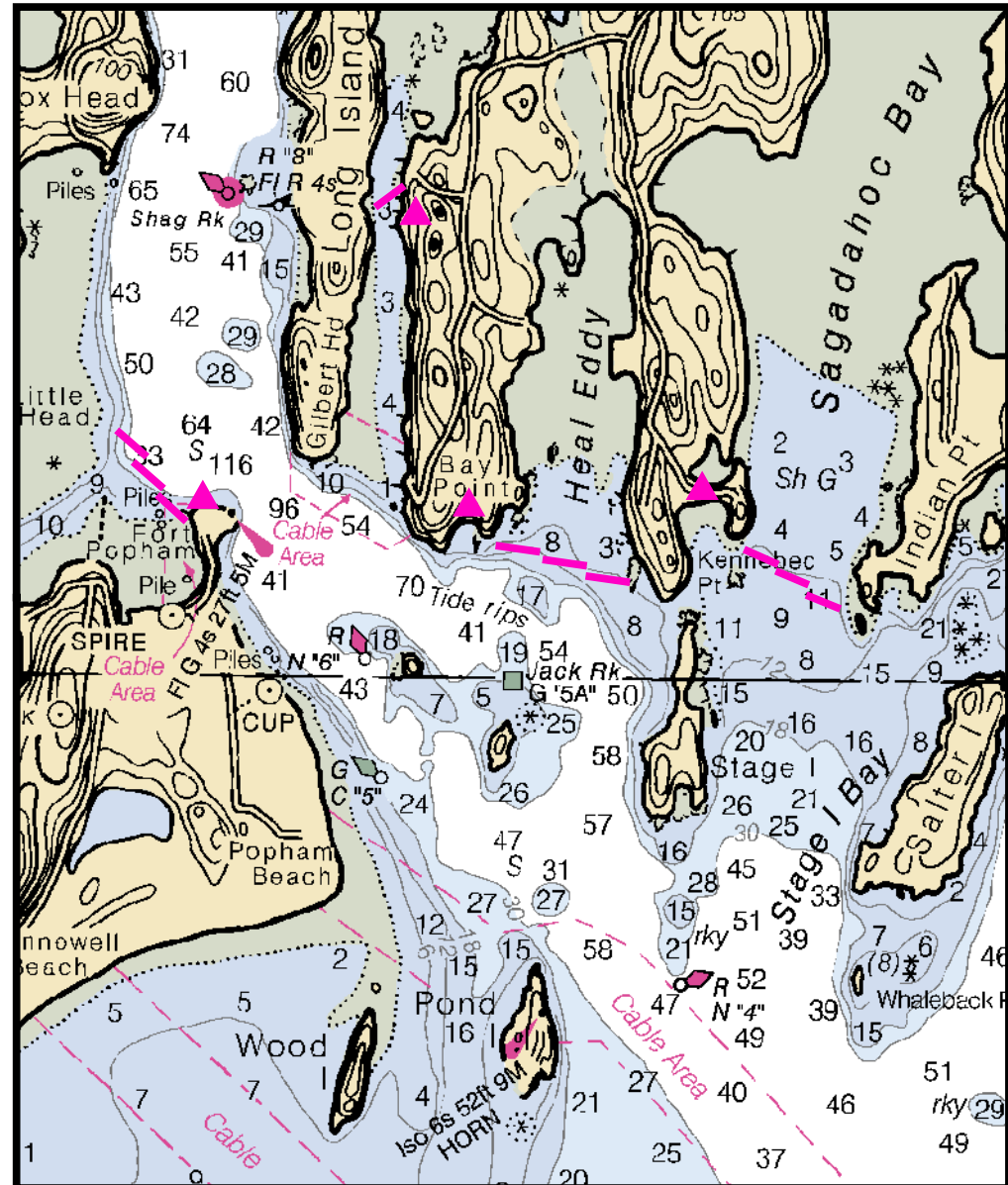
Lower Kennebec River

Phippsburg / Georgetown

0 2,000 4,000 Feet



Source: Esri, DigitalGlobe, GeoEye, Earthstar Geographics, CNES/Airbus DS, USDA, USGS, AeroGRID, IGN, and the GIS User Community



Lower Kennebec River

Town Phippsburg / Georgetown

Port Region Casco Bay

Latitude 43° 45.2' N

Longitude -69° 46.193'

Strategy B-27-1

NOAA Chart # 13293

ESI Map # 46C, 45D

EVI Map # 15, 16

Resources At Risk

ESI Shoreline Type(s) Exposed wave cut platforms (bedrock / mud / clay)
Exposed tidal flats

Environmental Concerns Piping plover / Least tern and Roseate tern nesting areas. Shorebird habitat and shellfish beds, diadromous fish and historical sites. Notify Maine Dept. of Inland Fisheries & Wildlife and Maine Historical Preservation Commission.

Strategy Information

Strategy Purpose To divert oil before it enters Atkins Bay, Heal Eddy and Sagadahoc Bay

Work Assignment Primary: Deploy three 400' sections of boom from the vicinity of the Popham Beach / Seguin Island Ferry Landing at Fort Popham across the channel in Atkins Bay.

Secondaries: 1. Deploy 500' of boom across the channel between Long Island and Georgetown mainland. 2. Deploy three 500 foot sections of boom across the entrance of Heal Eddy. 3. Deploy three 400' sections of boom across the entrance to Sagadahoc Bay.

Staging Areas Ft. Popham State Historic Site parking lot, Popham Rd., Phippsburg

Site Access Fort Popham State Historic Site, Fernwood Lane, Georgetown, Bay Point and Kennebec Point (see collection areas)

Nearest Boat Ramp Kennebec River launch, Fiddler's Reach Road, Phippsburg (all-tide)

Collection Points Possible collection areas: Vicinity of Fort Popham (Atkins Bay); shoreline near 35 Fernwood Lane, Georgetown (Long Island); beach near 39 First Beach Road, Georgetown (Heal Eddy); and beach near 41 Little Harbor Head Lane, Georgetown (Sagadahoc Bay)

Approx. Tidal Range (feet) 9

Max Current (knots) **Flood** 1 knot **Ebb** **Source** local knowledge estimate

Special Instructions Contact Maine State Historical Preservation Commission and Maine Dept. of Inland Fisheries and Wildlife prior to deployment.

Recommended Equipment / Resources

Length of Boom (feet)

Type of Boom 12" - 18" containment boom

Recommended Equipment (Minimum)

Primary:
5 - anchor systems: 35 lb. Danforth or equivalent and line for 3:1 scope plus tag line with buoy.
1 - shoreside connection
1 - vacuum truck or skimmer and storage
2 - workboats with minimum 90 hp
2 - boat operators
4 - laborers

For each secondary strategy:
1 - vacuum truck or skimmer and storage
2 - workboats with minimum 90 hp
2 - boat operators
4 - laborers

Long Island: 2 shoreside connections
Heal Eddy: 6 anchor systems
Sagadahoc Bay: 6 anchor systems

Each anchor system with 36 lb. Danforth or equivalent and line for 3:1 scope plus tag line with buoy.

Revised

03/06/2018

Last Field Tested