

B-14-1

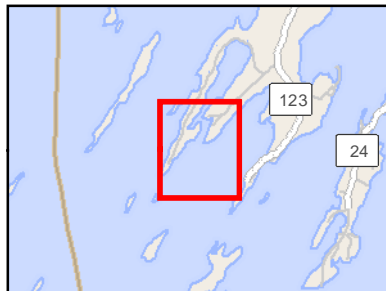
Basin Cove

Harpswell

0 500 1,000
Feet



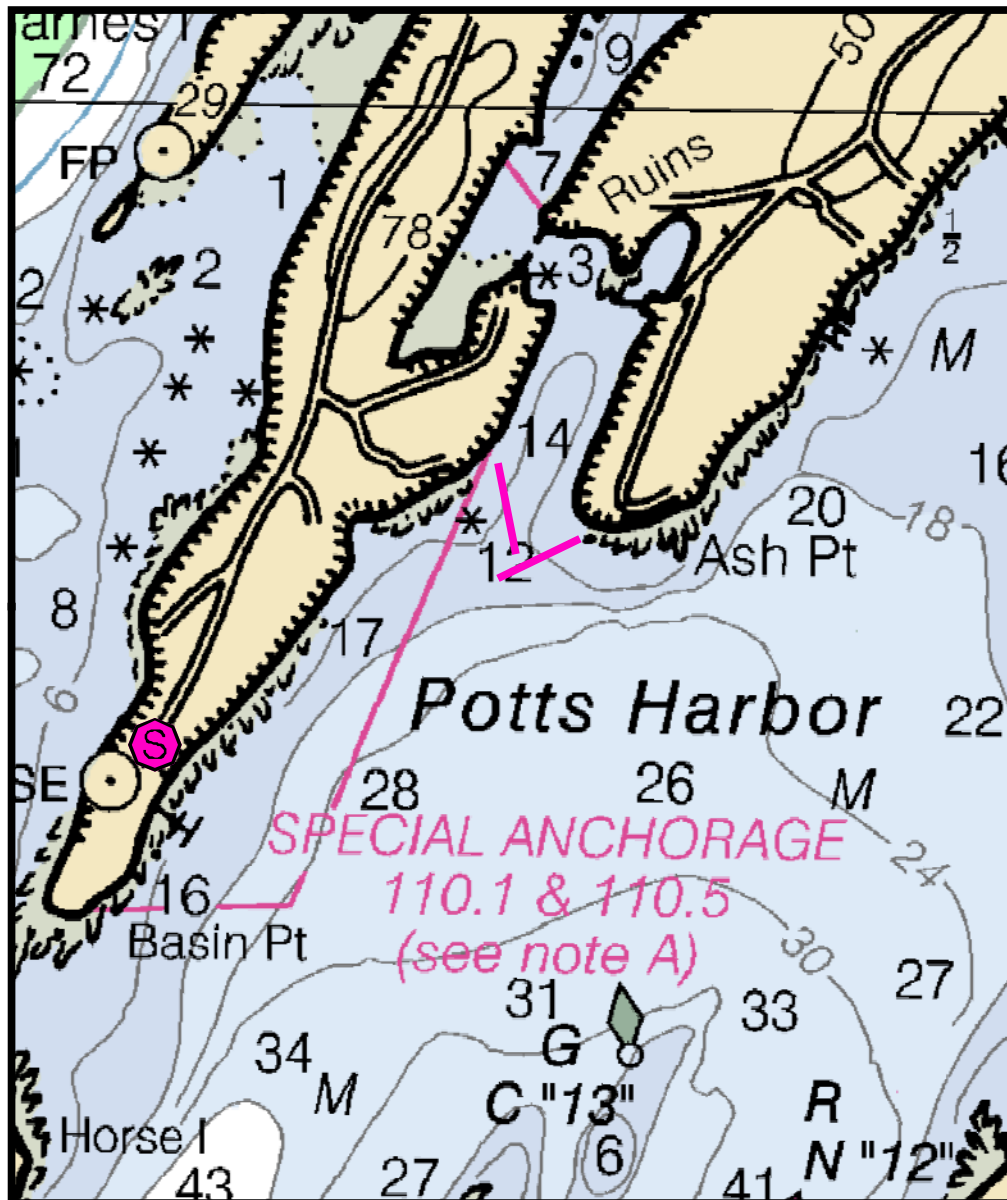
Printed: 2/5/2018



Legend	
	Boat Launch
	Containment boom
	Collection point
	Staging area
	Response vessel
	Collection point
	Tide slide
	Vac truck
	Skimmer
	Command post



Source: Esri, DigitalGlobe, GeoEye, Earthstar
Geographics, CNES/Airbus DS, USDA, USGS,
AEX, Getmapping, Aerogrid, IGN, IGP, swisstopo,
and the GIS User Community



Basin Cove

Town Harpswell

Port Region Casco Bay

Latitude 43° 44.687' N **Longitude** -70° 1.613' W

Strategy B-14-1

NOAA Chart # 13290 **ESI Map #** 47C

EVI Map # 14

Resources At Risk

ESI Shoreline Type(s) Exposed wave cut platforms

Environmental Concerns Eelgrass, aquaculture, shellfish beds

Strategy Information

Strategy Purpose To exclude oil from Basin Cove

Work Assignment Section 1: Deploy 500' of boom from west side of Basin Cove opening in a southerly direction.
Section 2: 500' of boom deployed from Ash Point in a southwesterly direction to form an overlapping apex with Section 1 boom.

Staging Areas Dolphin Marina

Site Access Dolphin Marina, 515 Basin Point Road, Harpswell

Nearest Boat Ramp Dolphin Marina. Nearest public launch: Chebeague Island

Collection Points Open water skimming if possible

Approx. Tidal Range (feet) 9

Max Current (knots) **Flood** 1 knot **Ebb** **Source**

Special Instructions Lobster Pound intakes at mouth of Basin Cove and on western side of Ash Point.

Recommended Equipment / Resources

Length of Boom (feet) 1000 **Type of Boom** 12" - 18" containment boom

Recommended Equipment (Minimum)

- 2 - anchor systems: 35 lb. Danforth or equivalent and line for 3:1 scope plus tag line with buoy.
- 2 - shoreside connections
- 1 - vacuum truck or skimmer and storage
- 1 - workboats with minimum 90 hp
- 1 - boat operators
- 2 - laborers

Unless otherwise indicated, the boom length given is the distance measured on the chart.
Actual length required may vary with conditions.