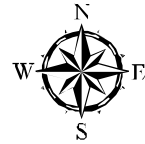


# B-10-1

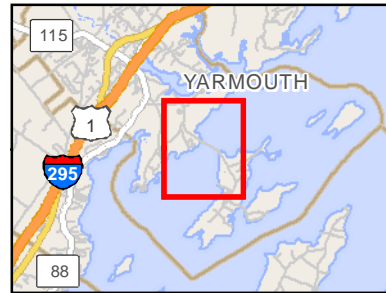
## Cousins Island Causeway

Yarmouth

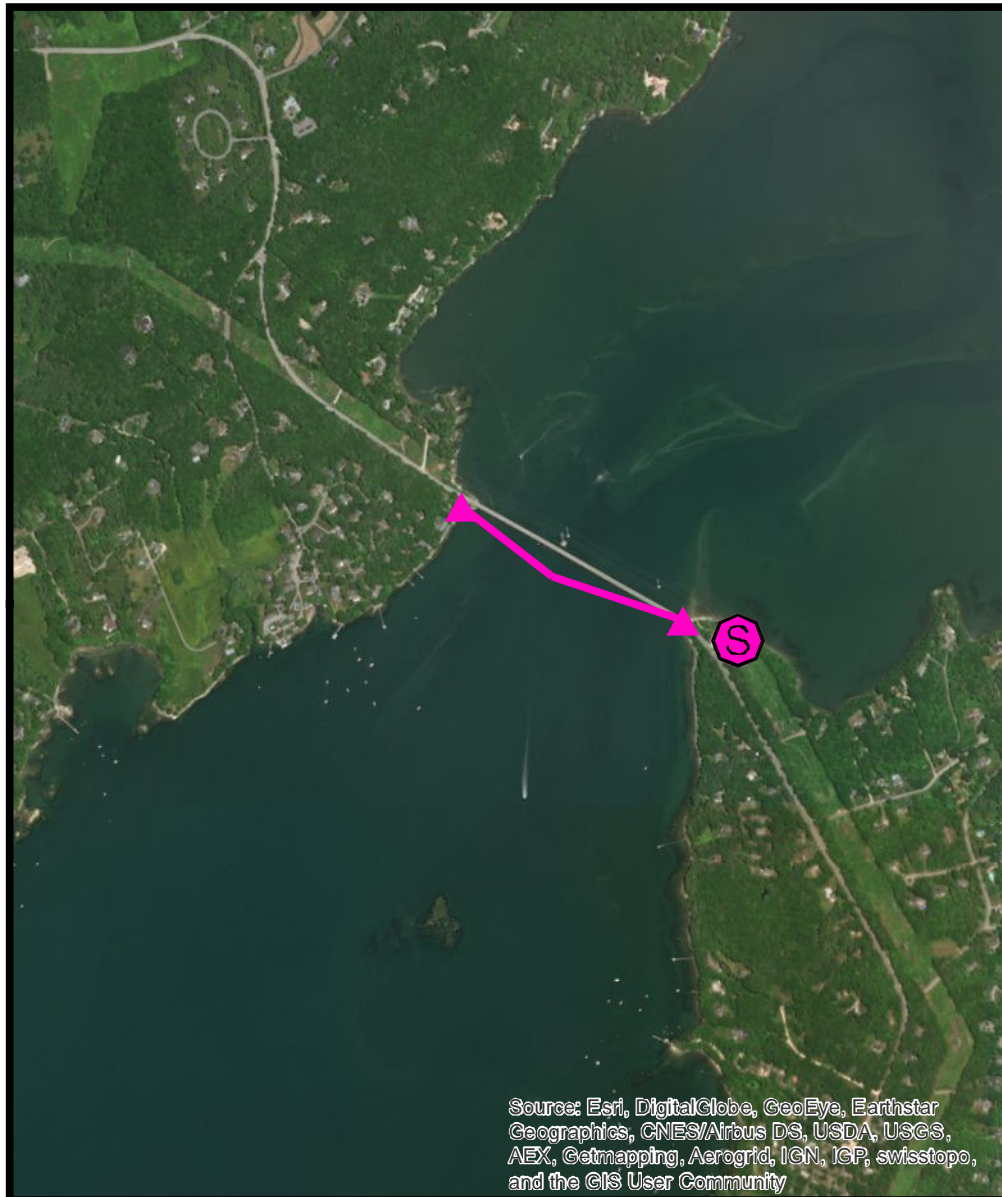
0 1,000 2,000  
Feet



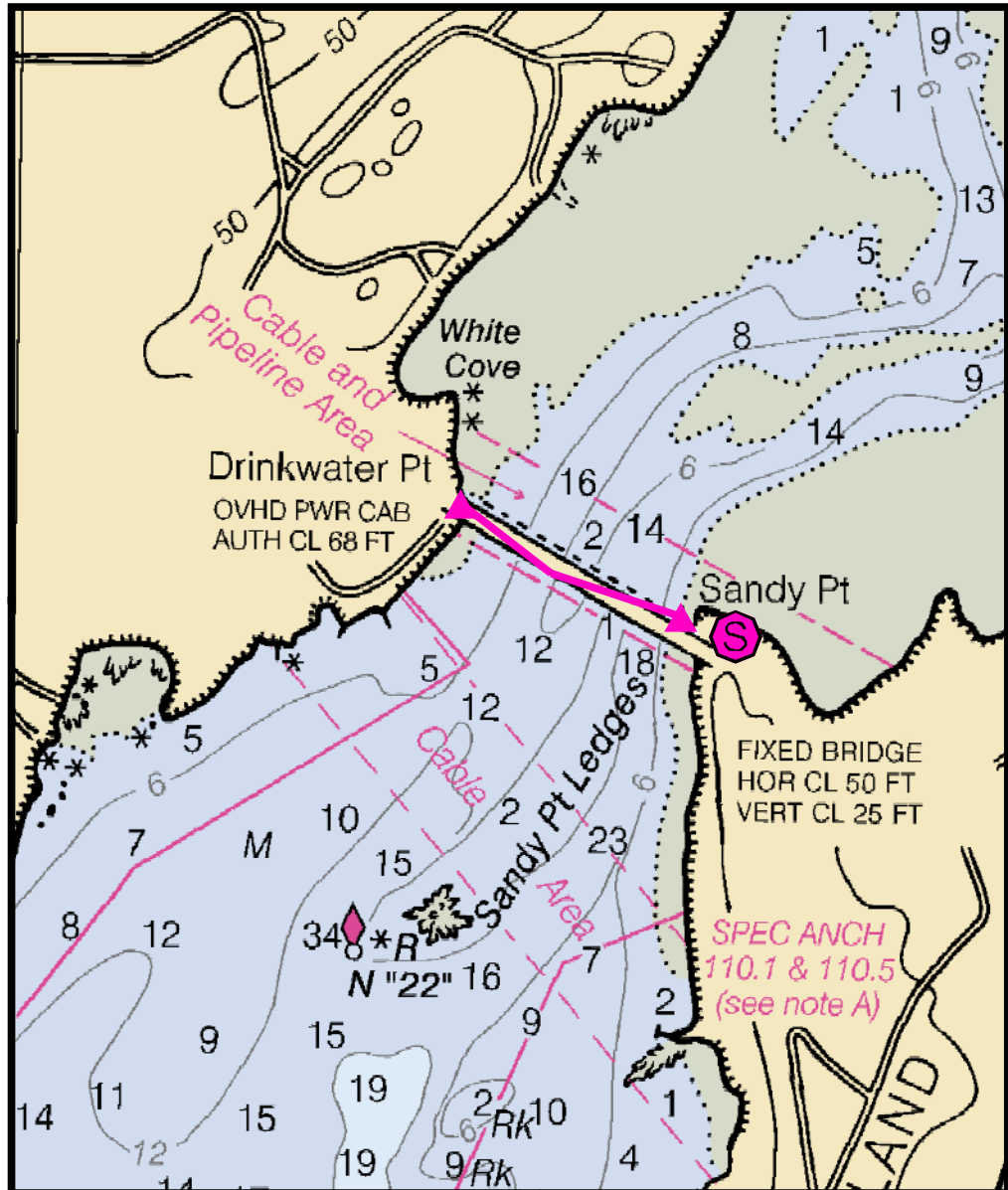
Printed: 1/31/2018



| Legend |                  |
|--------|------------------|
|        | Boat Launch      |
|        | Containment boom |
|        | Collection point |
|        | Tide slide       |
|        | Vac truck        |
|        | Staging area     |
|        | Skimmer          |
|        | Response vessel  |
|        | Command post     |



Source: Esri, DigitalGlobe, GeoEye, Earthstar Geographics, CNES/Airbus DS, USDA, USGS, AEX, Getmapping, Aerogrid, IGN, IGP, swisstopo, and the GIS User Community



## Cousins & Little John Islands

**Town** Yarmouth

**Port Region** Casco Bay

**Latitude** 43° 46.466' N **Longitude** -70° 9.015' W

**Strategy** B-10-1

**NOAA Chart #** 13290 **ESI Map #** 47D

**EVI Map #** 13

### Resources At Risk

**ESI Shoreline Type(s)** Exposed wave cut platforms (bedrock, mud,clay)  
Armored, rocky and steep shorelines

**Environmental Concerns** Eelgrass, horseshoe crab and waterfowl habitat on mainland side

### Strategy Information

**Strategy Purpose** To prevent oil from moving north under the bridge on flood tide. Divert oil to either side of bridge for collection.

**Work Assignment** Deploy two 1,000 foot sections of boom in an apex formation in front of the bridge.

**Staging Areas** Sandy Point and NextEra Energy Wyman Station, Cousins Island

**Site Access** NextEra Energy Wyman Station (Commercially owned). Sandy Point (public access) Drinkwater Point (residential shore)

**Nearest Boat Ramp** Ramp at Wyman Station. 4 miles - Falmouth Town Landing

**Collection Points** Drinkwater Point and Sandy Point - west side of Cousins Island Bridge

**Approx. Tidal Range (feet)** 9

**Max Current (knots)** **Flood** < 1 kt **Ebb** < 1 kt **Source** measured / observed

**Special Instructions** Current is minimal

### Recommended Equipment / Resources

**Length of Boom (feet)** 2000 **Type of Boom** 12" - 18" containment boom

**Recommended Equipment (Minimum)** 2 - anchor systems: 35 lb. Danforth or equivalent and line for 3:1 scope plus tag line with buoy.  
2 - shoreside connections  
1 - vacuum truck or skimmer and storage  
2 - workboats with minimum 90 hp  
2 - boat operators  
4 - laborers

Unless otherwise indicated, the boom length given is the distance measured on the chart.  
Actual length required may vary with conditions.