

# A-39-1

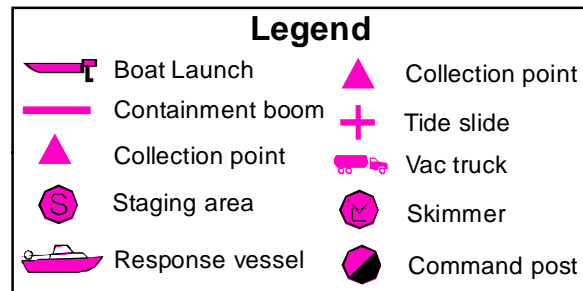
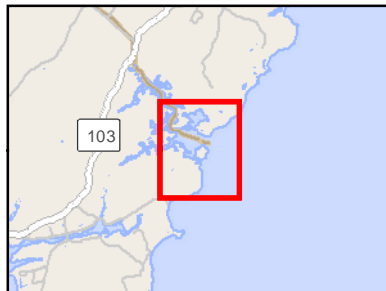
## Brave Boat Harbor

Kittery / York, ME

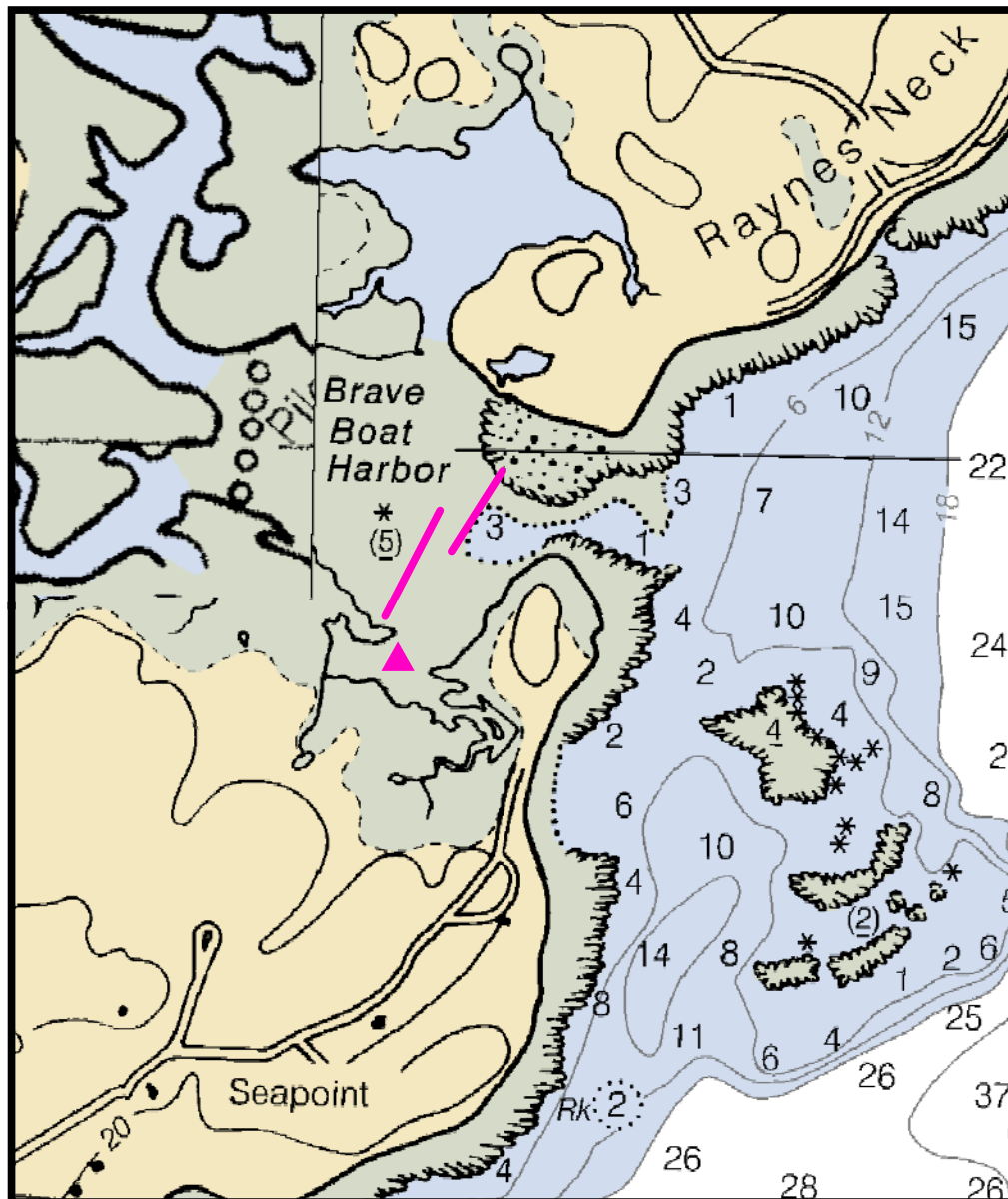
0 500 1,000  
Feet



Printed: 1/23/2018



Source: Esri, DigitalGlobe, GeoEye, Earthstar  
Geographics, CNES/Airbus DS, USDA, USGS,  
AEX, Getmapping, Aerogrid, IGN, IGP, swisstopo,  
and the GIS User Community



# Brave Boat Harbor

**Town** Kittery / York, ME

**Port Region** New Hampshire and Southern Maine

**Latitude** 43° 05.911 N **Longitude** 70° 39.161 W

**Strategy** A-39-1

**NOAA Chart #** 13283\_1 **ESI Map #** 54C

**EVI Map #** 3

## Resources At Risk

**ESI Shoreline Type(s)** Salt marsh  
Sheltered tidal flats

**Environmental Concerns** Site is located in and immediately adjacent to Rachel Carson National Wildlife Refuge. Contact the U.S. Fish & Wildlife Service in Wells (207) 646-9226 if deploying. Harbor has extensive marshes and mudflats and is a moderately vulnerable shorebird area. Elver run.

## Strategy Information

**Strategy Purpose** Divert oil to shore for collection near Old Cart Path Road.

**Work Assignment** Place one 400' section of boom and one 500' section of boom in a cascade configuration from Raynes Neck to Cutts Island as shown

**Staging Areas** (1) York Harbor  
(2) Traip Academy boat launch, 12 Williams Ave., Kittery (limited parking)  
(3) Kittery town boat launch, Pepperell Road, Kittery (not all tide)  
(4) Pierce's Island boat launch, Portsmouth  
(5) PNSY (with Navy permission / credentialing)

**Site Access** By Boat or on foot from Old Cart Path Road, Kittery

**Nearest Boat Ramp** Same as staging areas

**Collection Points** From Old Cart Path Road, Kittery

**Approx. Tidal Range (feet)** 9

**Max Current (knots)** **Flood** **Ebb** **Source**

**Special Instructions** Difficult access

## Recommended Equipment / Resources

**Length of Boom (feet)** 900 **Type of Boom** 12" - 18" containment boom

**Recommended Equipment (Minimum)** 1 - anchor system with 35 lb. Danforth or equivalent and line for 3:1 scope plus tag line  
2 - shoreside connections  
1 - workboats (towboats) with minimum 90 hp  
1 - boat operators  
2 - laborers

Unless otherwise indicated, the boom length given is the distance measured on the chart. Actual length required may vary with conditions.